

# TABLE OF CONTENTS

## SERVICE DEPARTMENT

<b>01</b>	GT WORKSTATIONS .....	3
	CASE STUDY - JAGUAR METRO WEST .....	5
	CASE STUDY - OXFORD DODGE .....	7
	CASE STUDY - QUEENSWAY HONDA .....	9
	CASE STUDY - PFAFF BMW .....	11
	ALIGNMENT BAYS .....	13
	WASH BAYS .....	15
	TOOL ROOM SOLUTIONS .....	16
	WASH STATIONS .....	17
	MOBILE SOLUTIONS .....	18
SERVICE ADVISOR DESKS .....	19	

## PARTS DEPARTMENT

<b>21</b>	SPIDER SHELVING .....	23
	SPECIALIZED RACKING .....	25
	PARTS COUNTERS .....	27
	DESKS & FURNITURE .....	29
	SHELVING SUPPORTED MEZZANINES .....	31
	STRUCTURAL MEZZANINES .....	33
	STACKERS .....	35
	TIRE CONVEYORS .....	36

## TIRE STORAGE

<b>37</b>	TIRE RACKING .....	39
	HIGH DENSITY SYSTEMS .....	41
	TIRE CAROUSELS .....	42

## ADDITIONAL PRODUCTS

<b>43</b>	SECURITY CLOSURES .....	45
	MODULAR FENCING .....	46
	RECORD STORAGE .....	47
	LOCKERS .....	48





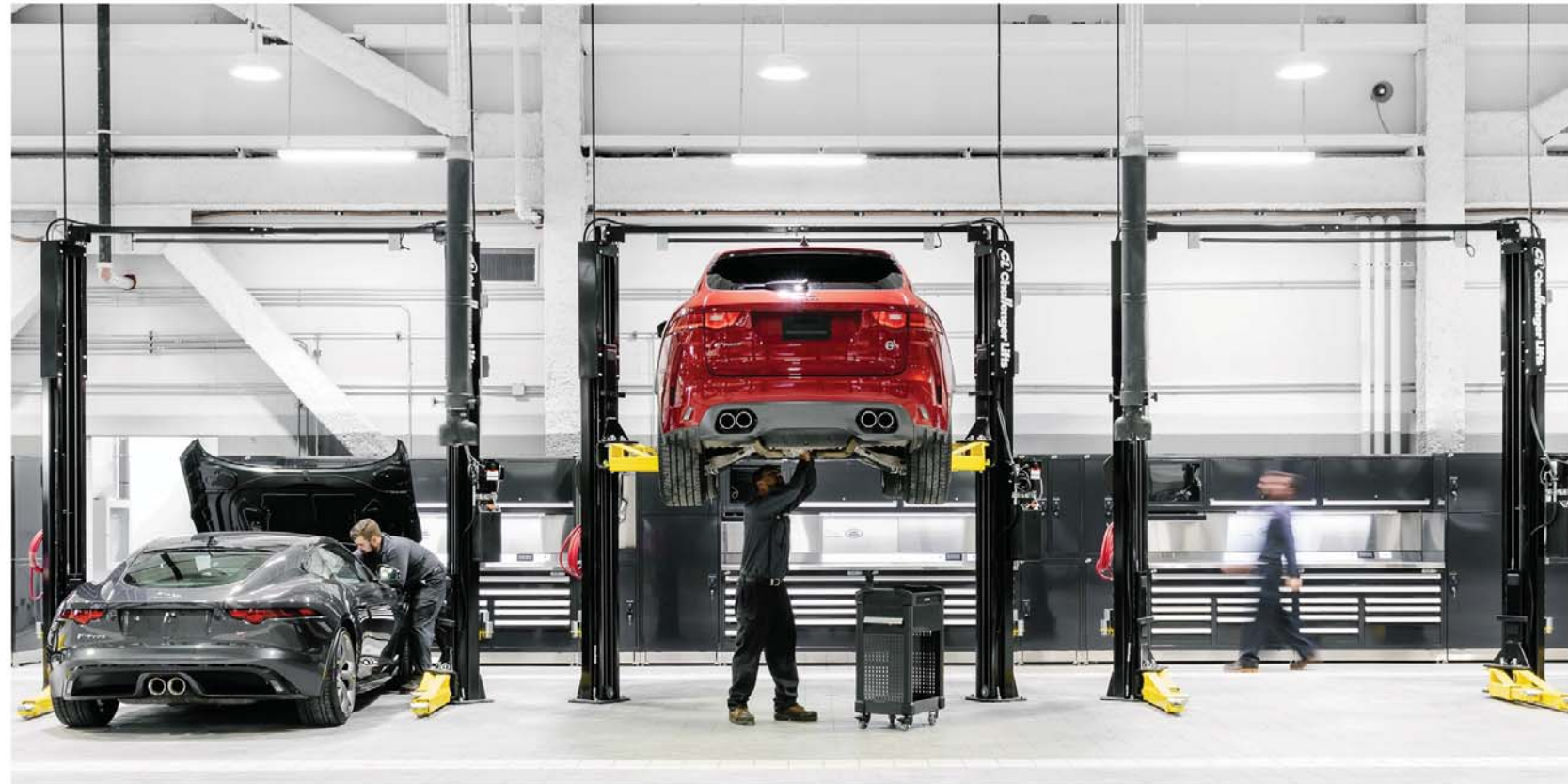
**01**  
**SERVICE DEPARTMENT**





# GT WORKSTATIONS





## JAGUAR LAND ROVER METRO WEST

Location: Toronto, Ontario    Service Dept: 13,000 ft<sup>2</sup>    No. of Bays: 19

Marino's Automotive Group operates six dealerships across the GTA. The newest addition for the group is a Jaguar Land Rover facility which features the latest innovations in sales and service technology, almost as impressive as their line-up of luxury vehicles.



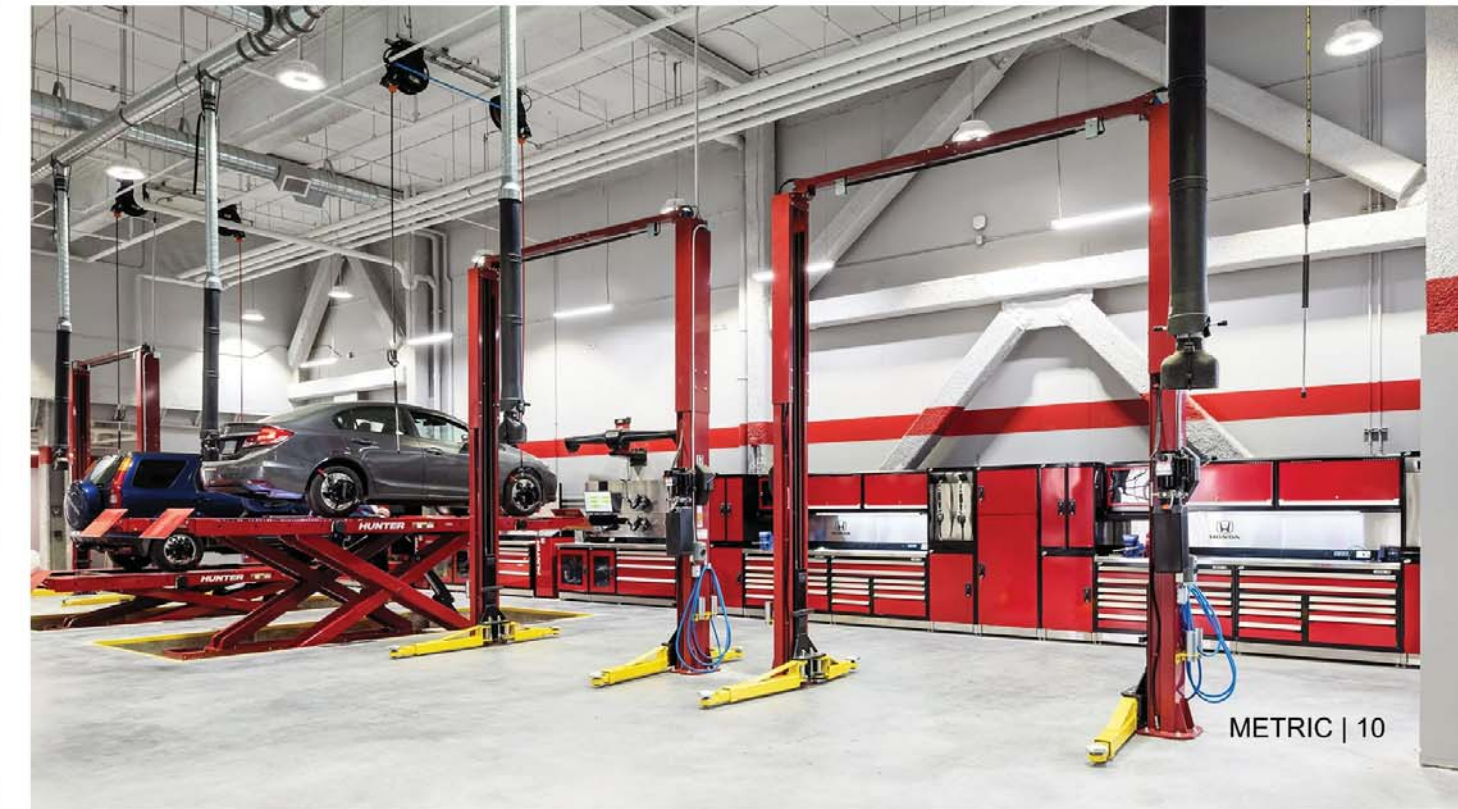
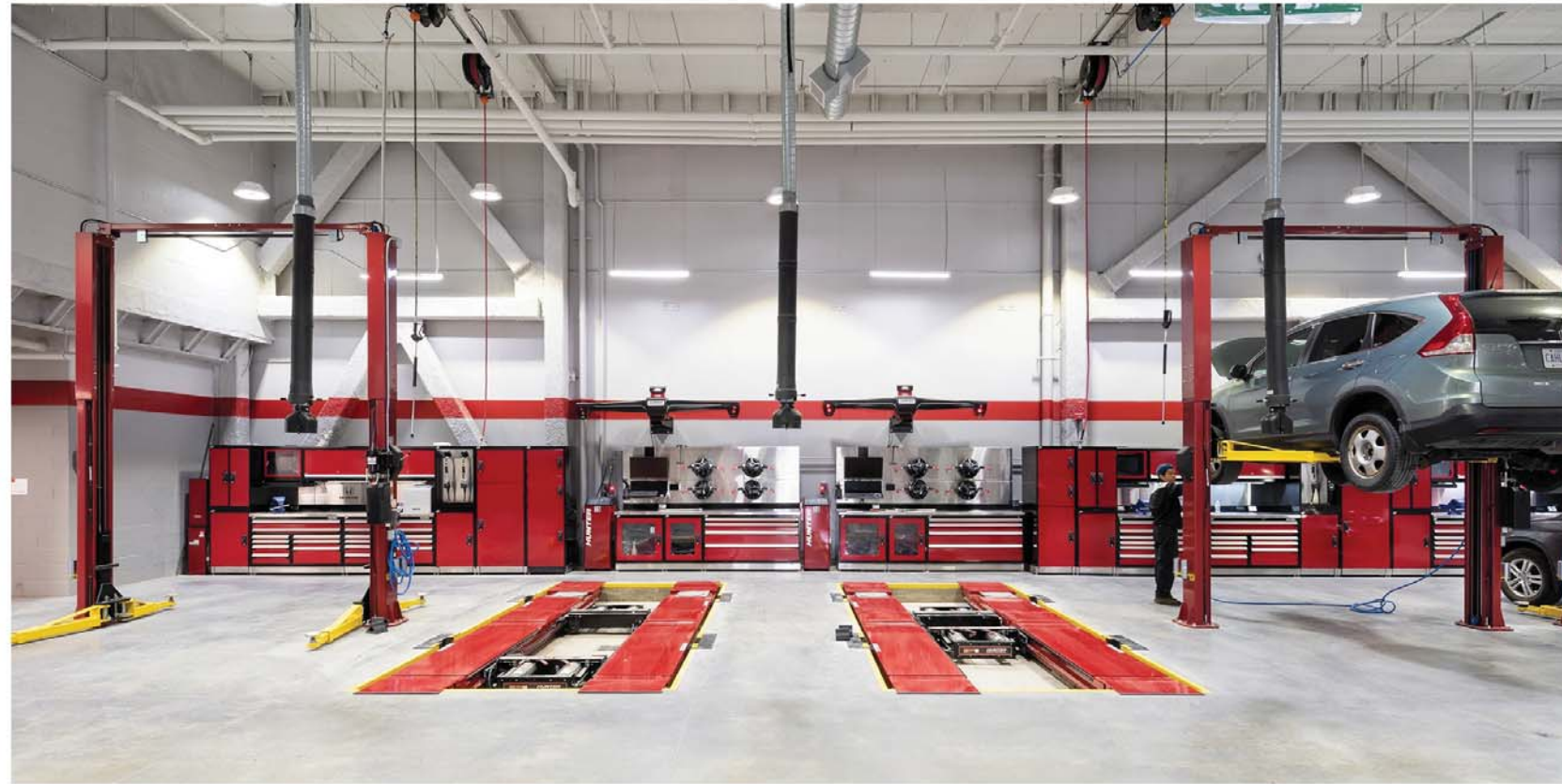


## OXFORD DODGE

Location: London, Ontario    Service Dept Size: 22,000 ft<sup>2</sup>    No. of Bays: 30

Oxford Dodge has been operating in London for over 40 years. When it came time to design their new dealership, the Management team wanted no detail overlooked, and knew to call Metric Storage - the market leader in turn-key storage solutions for dealerships across Ontario.





## QUEENSWAY HONDA

Location: Toronto, Ontario    Service Dept: 16,000 ft<sup>2</sup>    No. of Bays: 21

Situated along one of Canada's busiest highways, this new flagship store was built to meet its current capacity as well as growth into the future. From uniquely designed workstations that allow multiple shifts, to an eye-catching colour scheme, this truly is a state-of-the-art service centre.





## PFAFF BMW

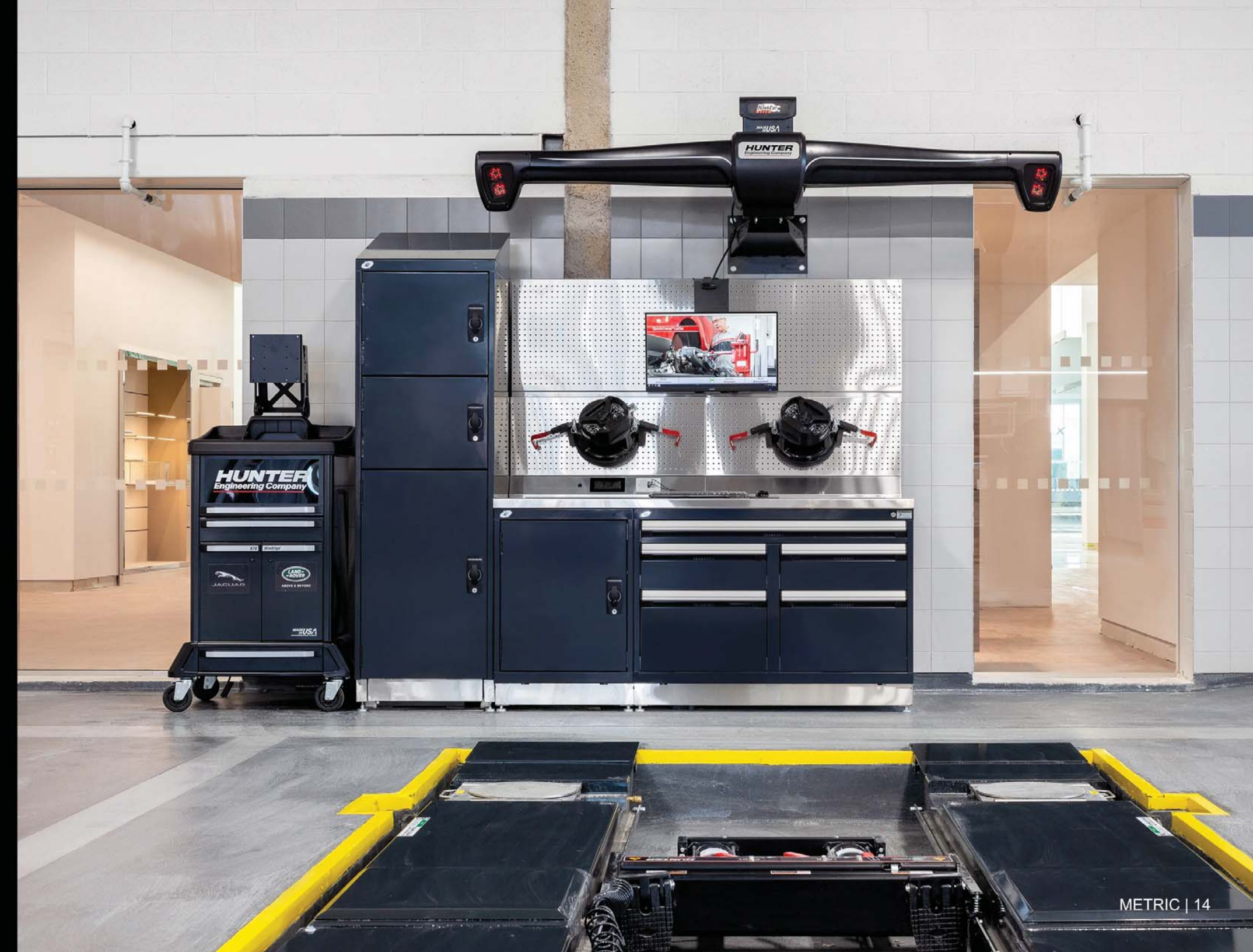
Location: Mississauga, Ontario    Service Dept: 18,000 ft<sup>2</sup>    No. of Bays: 30

Pfaff BMW's service department was designed to meet and exceed BMW Facility Standards. From the technician's toolboxes to overhead task lighting every detail was taken into consideration. It's no wonder they've been able to retain such highly skilled technicians.

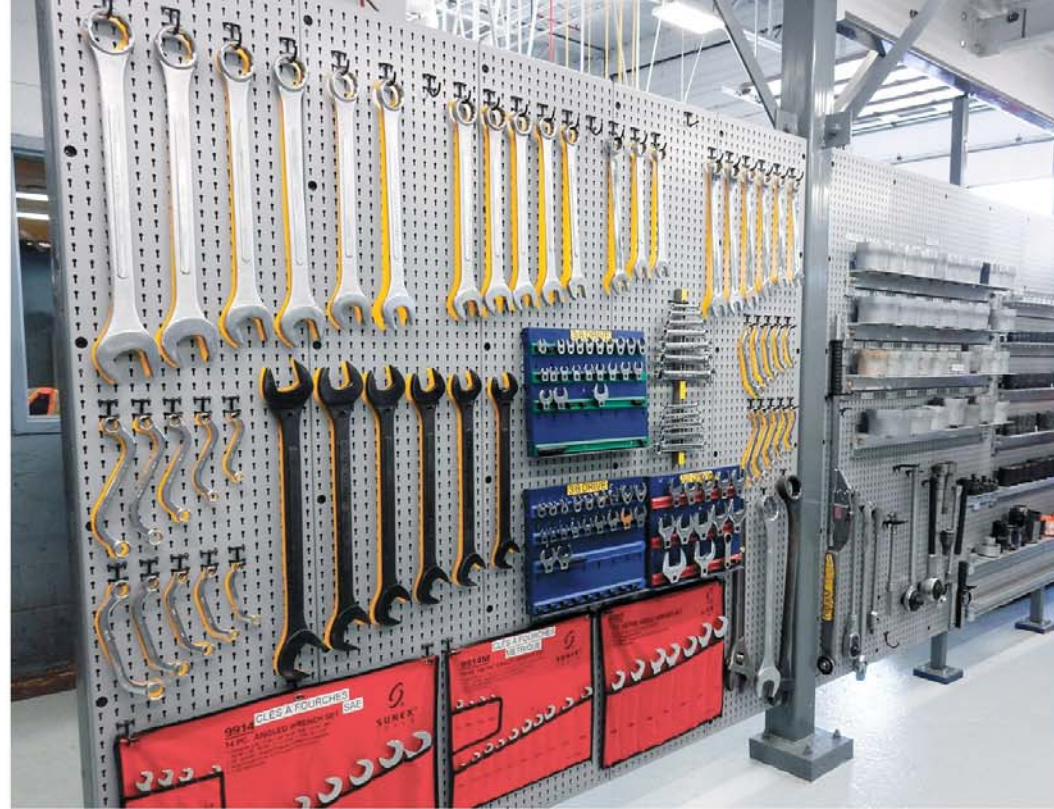




# ALIGNMENT BAYS



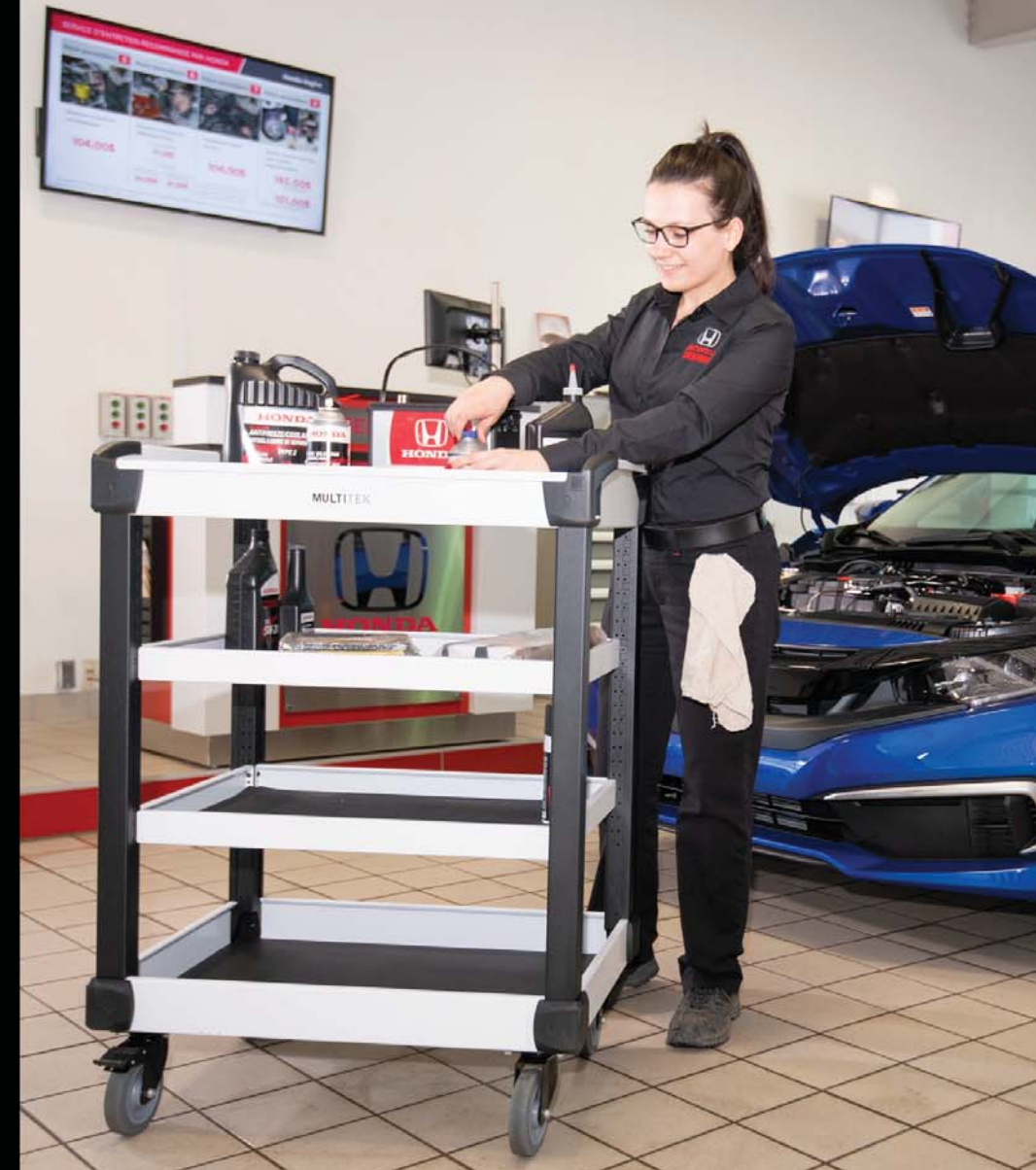




# WASH BAYS

# TOOL ROOM SOLUTIONS





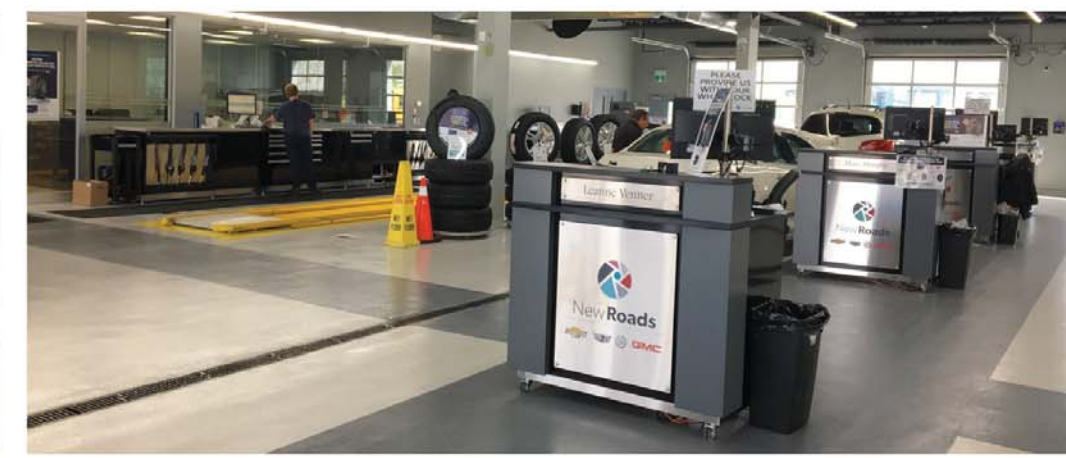
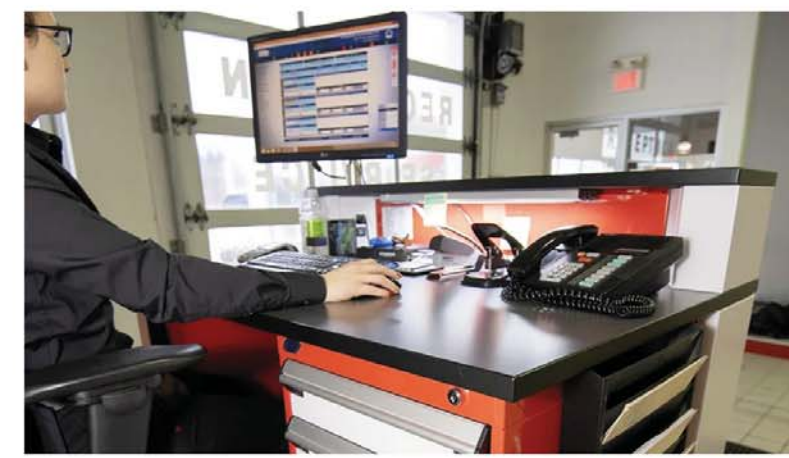
## WASH STATIONS

## MOBILE SOLUTIONS





# SERVICE ADVISOR DESKS







21

PARTS DEPARTMENT





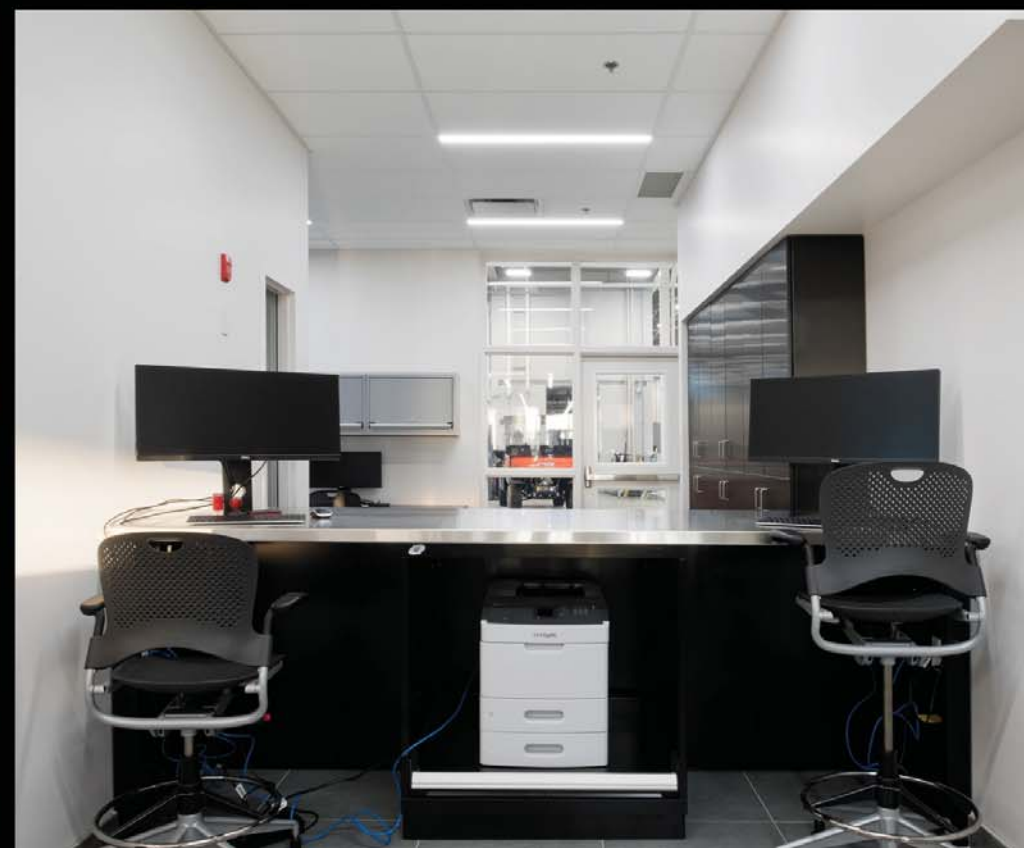
# SPIDER SHELVING





## SPECIALIZED RACKING





# PARTS COUNTERS

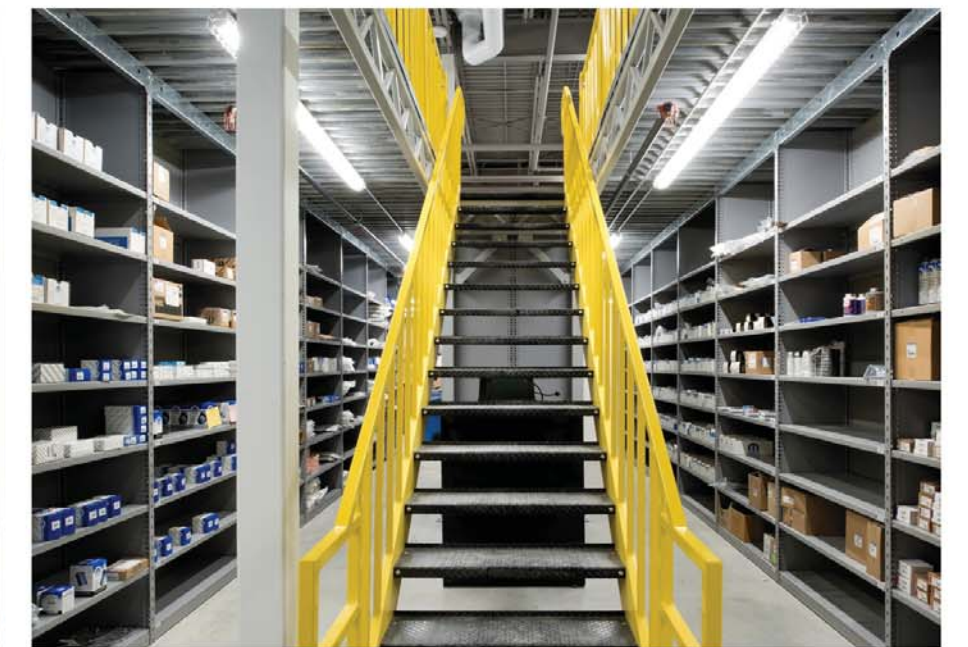




## DESKS & FURNITURE

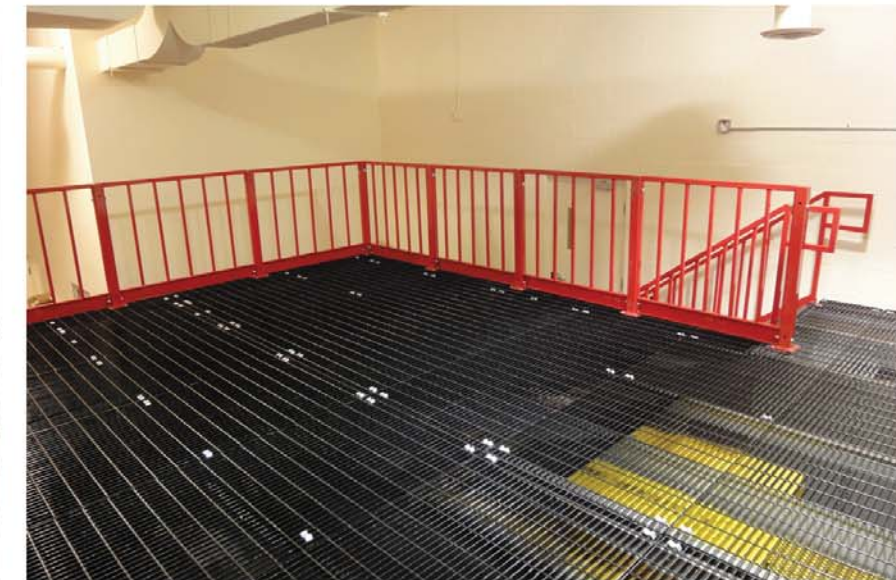






# SHELVING SUPPORTED MEZZANINES





# STRUCTURAL MEZZANINES





## STACKERS



## TIRE CONVEYORS





**37**

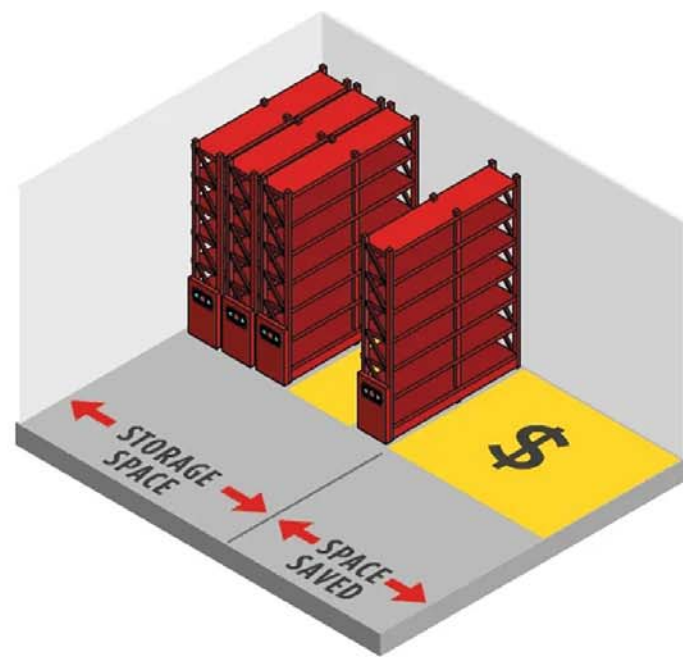
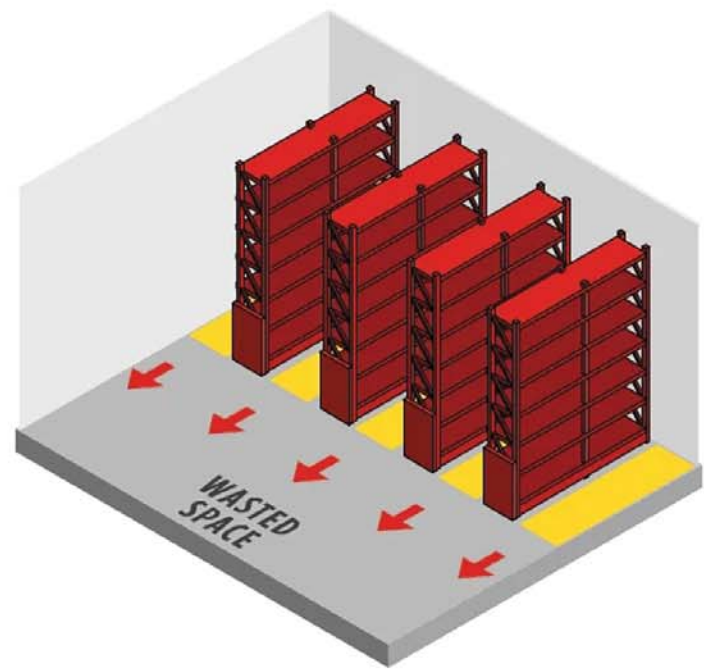
**TIRE STORAGE**





# TIRE RACKING





## HIGH DENSITY SYSTEMS

## TIRE CAROUSELS



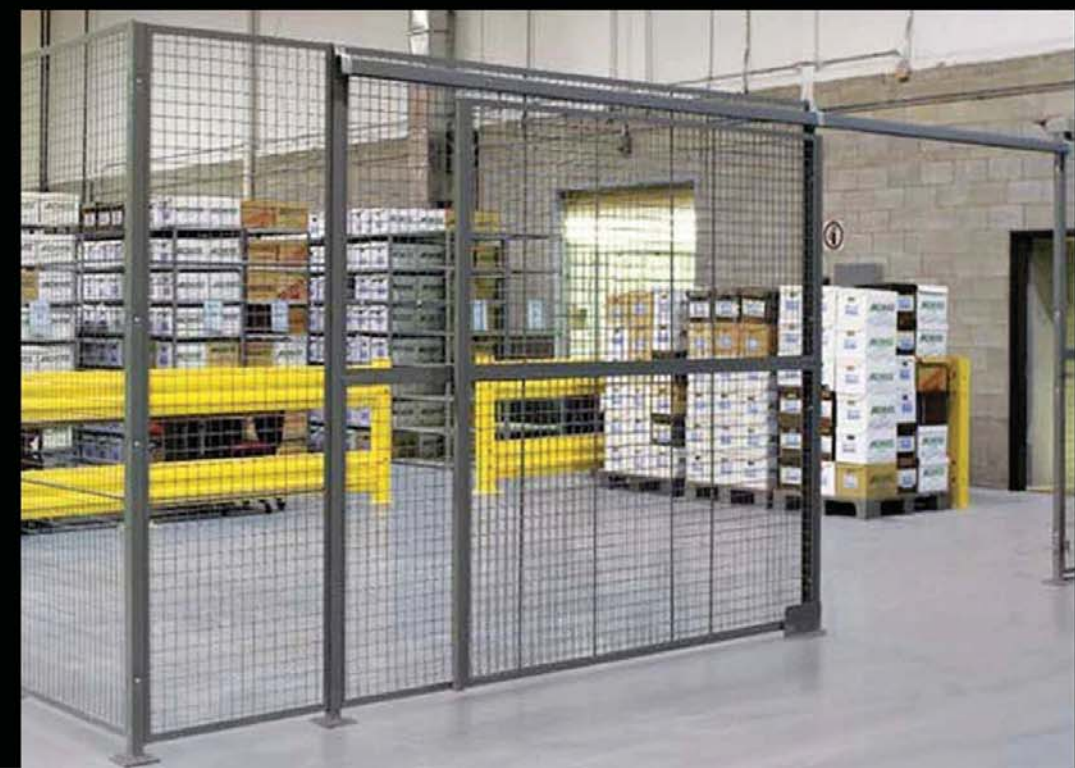
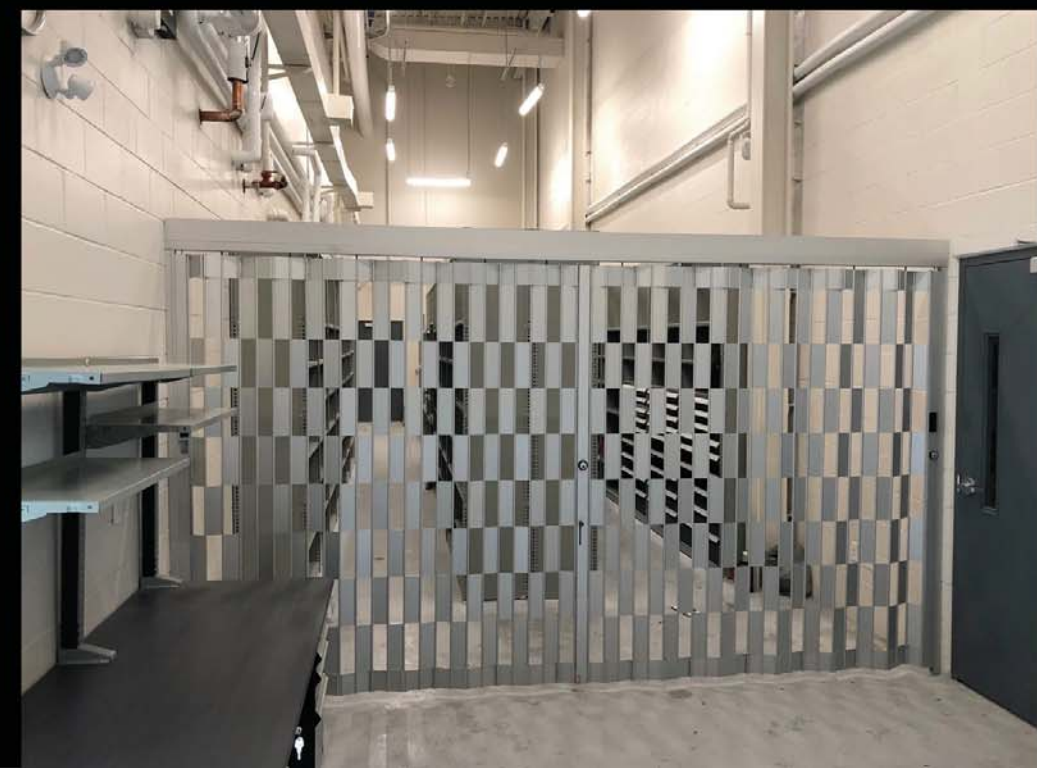
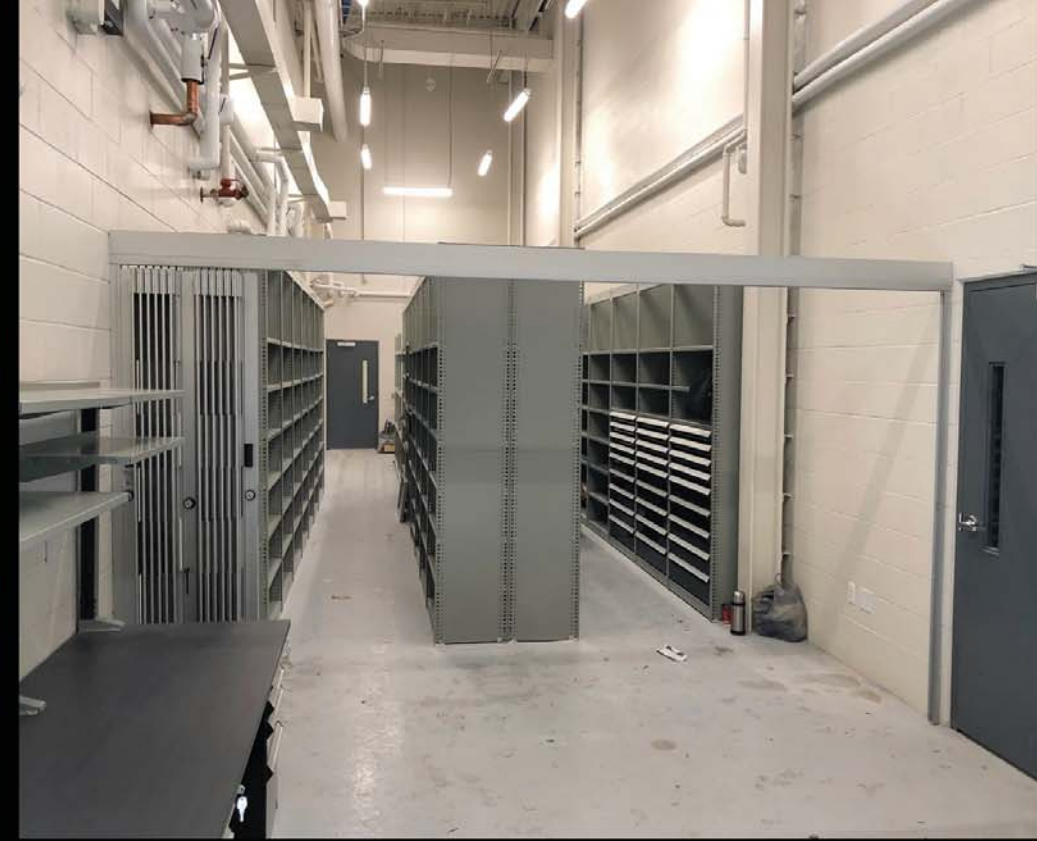


43

ADDITIONAL PRODUCTS



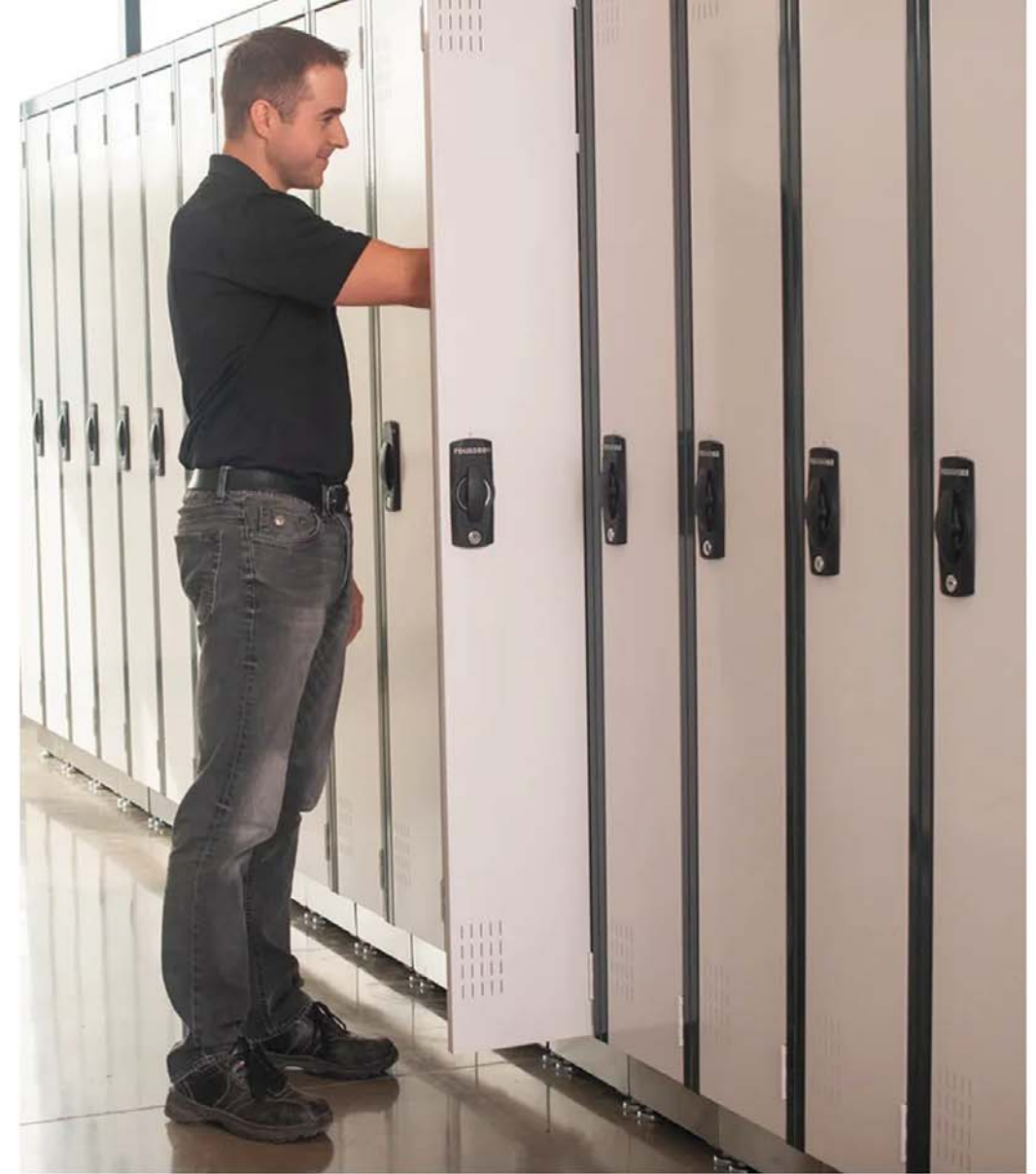




# SECURITY CLOSURES

# MODULAR FENCING



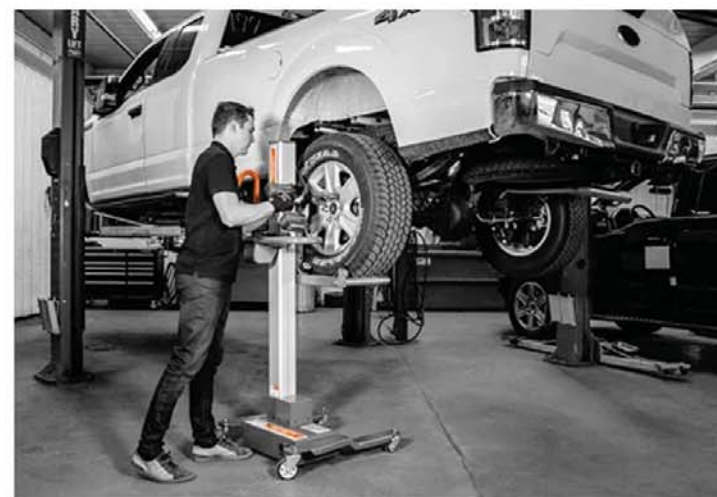


# RECORD STORAGE



# LOCKERS





**We're continuously expanding our product portfolio, to meet your requirements**

**Call Us Today For a Free Consultation**  
**1-800-265-5117**  
**[www.Metric-Automotive.com](http://www.Metric-Automotive.com)**