

AKROBIN SUPPORT RACKS

Locate Louvered panels with AkroBins anywhere for easy access to small parts. Available in two sizes, louvered bin panels can be wall-mounted, attached to the back of shelving, mounted on benches, carts, inside cabinets, fastened to slotted angle components, or used for service truck interiors.

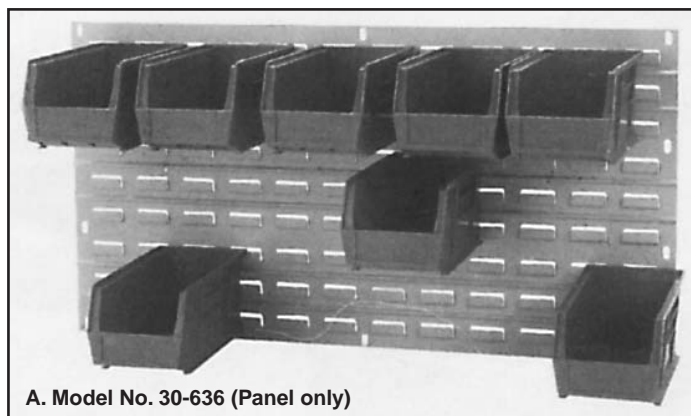
Bins are easily removed, refilled, and replaced. Each heavy-duty panel is 16-gauge cold-rolled steel. Slotted holes 3/4"L x 3/8"W at 6" centers simplify installation. Grey baked enamel. Installation Note: Panels must be securely fastened to materials of adequate load bearing strength. Each panel must be secured vertically at the center.

BIN QUANTITY TABLE

(Quantity of Identical AkroBins that fit Model 30-636 Panel)

Combined Panel Height (35 3/4" Wide)	Akro Bin 30-210	Akro Bin 30-220	Akro Bin 30-230	Akro Bin 30-235	Akro Bin 30-239	Akro Bin 30-240	Akro Bin 30-250
1 Panel=19"H	32	32	18	9	8	8	4
2 Panels=37"H	72	72	36	18	18	16	8
3 Panels=55"H	104	104	54	27	28	28	14
4 Panels=73"H	144	144	72	36	36	36	18

For 30-618 Panel, use 1/2 of bin quantities shown above.

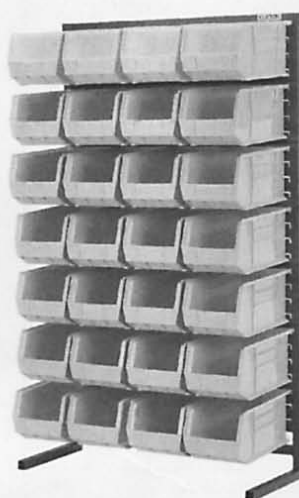


A. Model No. 30-636 (Panel only)

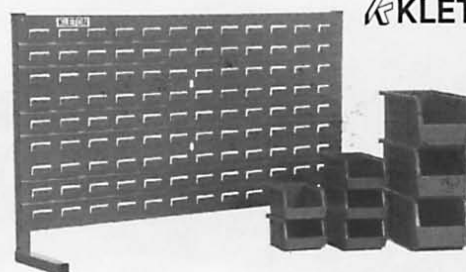
Model No.	Panel Size W" x H"	Wt. Lbs.
30-618	18 x 19	6
30-636	36 x 19	12



B. Model No. 1005-A



C. Model No. BR3661S-A



D. Model No. 98-700 (Rack only)



E. Model No. BC3824-A

B. MOBILE BIN RACKS

Two mobile bin racks are available, a single sided unit (Model 1002, incorporating two 30-636 panels) and a double sided unit (Model 1005, incorporating six panels). These units are ideal for transportation of small parts and are shipped all-welded. Model 1005-A (shown) includes 100 AkroBins of various sizes.

Model No.	Rack Type	Dimensions W" x H" x D"	Wt. Lbs.
1002	Single Sided	36 x 52 x 16	60
1002-A*	Single, c/w bins	36 x 52 x 16	83
1005	Double sided	36 x 63 x 24	120
1005-A*	Double, c/w bins	36 x 63 x 24	187

* Please specify AkroBin colour (Blue, Red, or Yellow).

C. STATIONARY BIN RACKS

The Model BR3661S stationary single-sided bin rack (shown) is made of 1 1/4" square tube frame, and 16 gauge heavy duty steel panels. The unit incorporates three Model 30-636 panels (see chart above for bin unit capacities). The Model BR3661D double sided bin rack incorporates 6 panels. Both shipped all welded. Model No. BR3661S-A (shown) includes 28 Model 30-240 AkroBins.

Model No.	Rack Type	Dimensions W" x H" x D"	Wt. Lbs.
BR3661S	Single sided	36 x 61 x 12	60
BR3661S-A*	Single c/w bins	36 x 61 x 12	107
BR3661D	Double sided	36 x 61 x 24	100
BR3661D-A*	Double c/w bins	36 x 61 x 24	194

* Please specify AkroBin colour (Blue, Red, or Yellow).

D. BENCH RACK

The Model 98-700 (shown) all welded bench rack is a self-supporting work station organizer, which incorporates one Model 30-636 panel (see chart above for bin unit capacities.) This unit may be placed on any flat surface near a work area without any bolts or fasteners. The Model 98-800 all welded bench rack is a larger capacity unit incorporating four Model 30-636 panels, designed for permanent installation on a 72" workbench. Blue enamel finish.

Model No.	Rack Type	Dimensions W" x H"	Wt. Lbs.
98-700	Free standing	36 x 22	22
98-800	Bolt-on	72 x 40	95

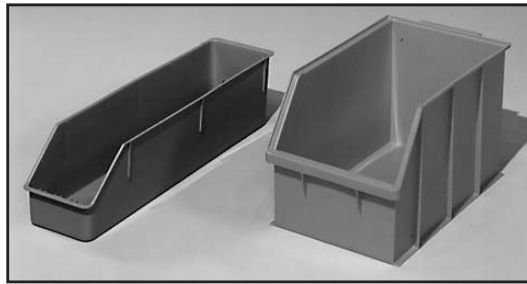
E. BIN CARTS

The Model BC3824 mobile bin cart has a work surface of 14 gauge steel. Bin cart measures 38 1/2"L x 24"W x 37 1/2"H and features 5" rubber casters. Shipped all-welded. It incorporates two 30-636 panels (one each side) and will accommodate various AkroBin quantities (see chart above). Model BC3824-A (shown) includes 16 Model 30-240 and 4 Model 30-250 AkroBins.

Model No.	Rack Type	Dimensions W" x H" x D"	Wt. Lbs.
BC3824	Double sided	24 x 36 1/2 x 38 1/2	95
BC3824-A*	Double c/w bins	24 x 36 1/2 x 38 1/2	133

* Please specify AkroBin colour (Blue, Red, or Yellow).

AKRO-MILS CANADA BINS & STORAGE CASES



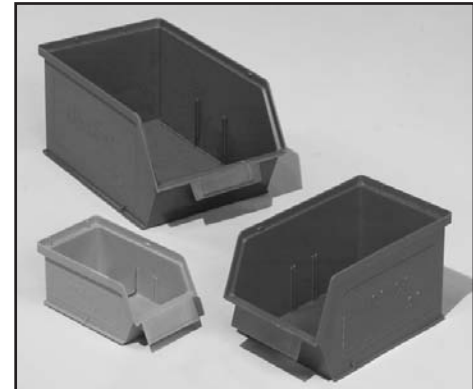
Shelf Boxes Available in blue only

Model No.	Outside Dimensions"			Weight Lbs	Cu. Ft.	No. Per Carton
	L	W	H			
030-550P	24 ¹ / ₄	6	5 ³ / ₄	1.31	0.39	8
030-600P	18	10 ³ / ₈	10	2.31	0.84	4
C30-605E	16	16	8 ³ / ₁₆	2.30	0.90	6

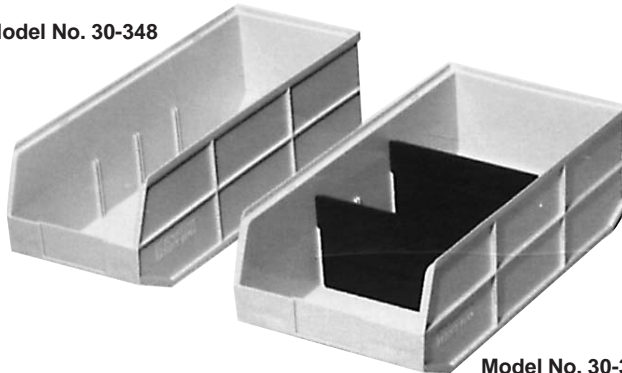
Star Bins

- Choice of 3 colours - Blue, Red, Yellow
- 3 sizes

Model No.	Outside Dimensions"			Weight Lbs	Cu. Ft.	No. Per Carton
	L	W	H			
C30-602P	13 ⁵ / ₁₆	7 ¹⁵ / ₁₆	6	1.25	0.24	6
C30-603P	7 ⁵ / ₁₆	3 ⁷ / ₈	2 ⁷ / ₈	0.20	0.24	48
C30-604P	9 ⁵ / ₈	5 ⁵ / ₈	5	0.56	0.10	12



Model No. 30-348



Model No. 30-358

1800 SERIES AkroBins

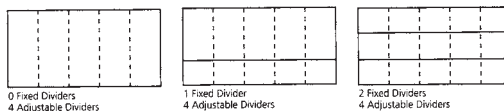
Extra large and extra strong for heavier, bulkier parts and components, 1800 Series AkroBins are designed to fit standard 18" deep shelving. They are stackable, with reinforcing ribs to prevent spreading under big loads. Front and back finger grips make handling easy. The color is light beige. One black cross-wise divider per bin is provided. Available in light beige only.

Model No.	Inside Dimensions	Outside Dimensions	Wt. Lbs. (ea.)	Qty/ Pkg.
	Inches L x W x H	Inches L x W x H		
30-348	20" x 7 ³ / ₈ " x 6 ¹ / ₂ "	20 ¹ / ₂ " x 8 ¹ / ₄ " x 7"	3.5	6
30-358	20" x 10 ¹ / ₈ " x 6 ¹ / ₂ "	20 ¹ / ₂ " x 11" x 7"	4.0	6

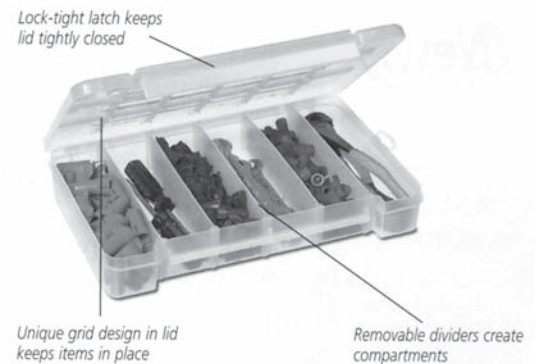
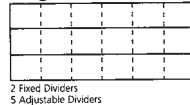
STORAGE CASES

- The perfect case for storing and organizing supplies!
- Cases available in 3 sizes with different divider configurations.
- Grid design in lid keeps items from spilling into other compartments.
- Small and medium cases include 4 front-to-back adjustable dividers.
- Large cases include 5 front-to-back adjustable dividers.

Small & Medium Cases



Large Cases



Model No.	Description	Inches	Maximum Compartments	Ctn. Qty.
		L x W x H		
05705	Small Case (2 Fixed Dividers)	8 ⁵ / ₈ " x 5 ¹ / ₈ " x 1 ⁵ / ₈ "	15	12
05805	Medium Case (2 Fixed Dividers)	11" x 7" x 2 ³ / ₈ "	15	6
05807	Medium Case (1 Fixed Divider)	11" x 7" x 2 ³ / ₈ "	10	6
05905	Large Case (2 Fixed Dividers)	14 ³ / ₈ " x 9 ¹ / ₂ " x 2 ¹ / ₂ "	18	6